

Supplementary Material

Traveling Wave on a Phase-Segregated Metal Composite Caused by Electrochemical Reaction: Direct Monitoring for Silver-Wave

Yuko Nagamine*, Kenichi Yoshikawa

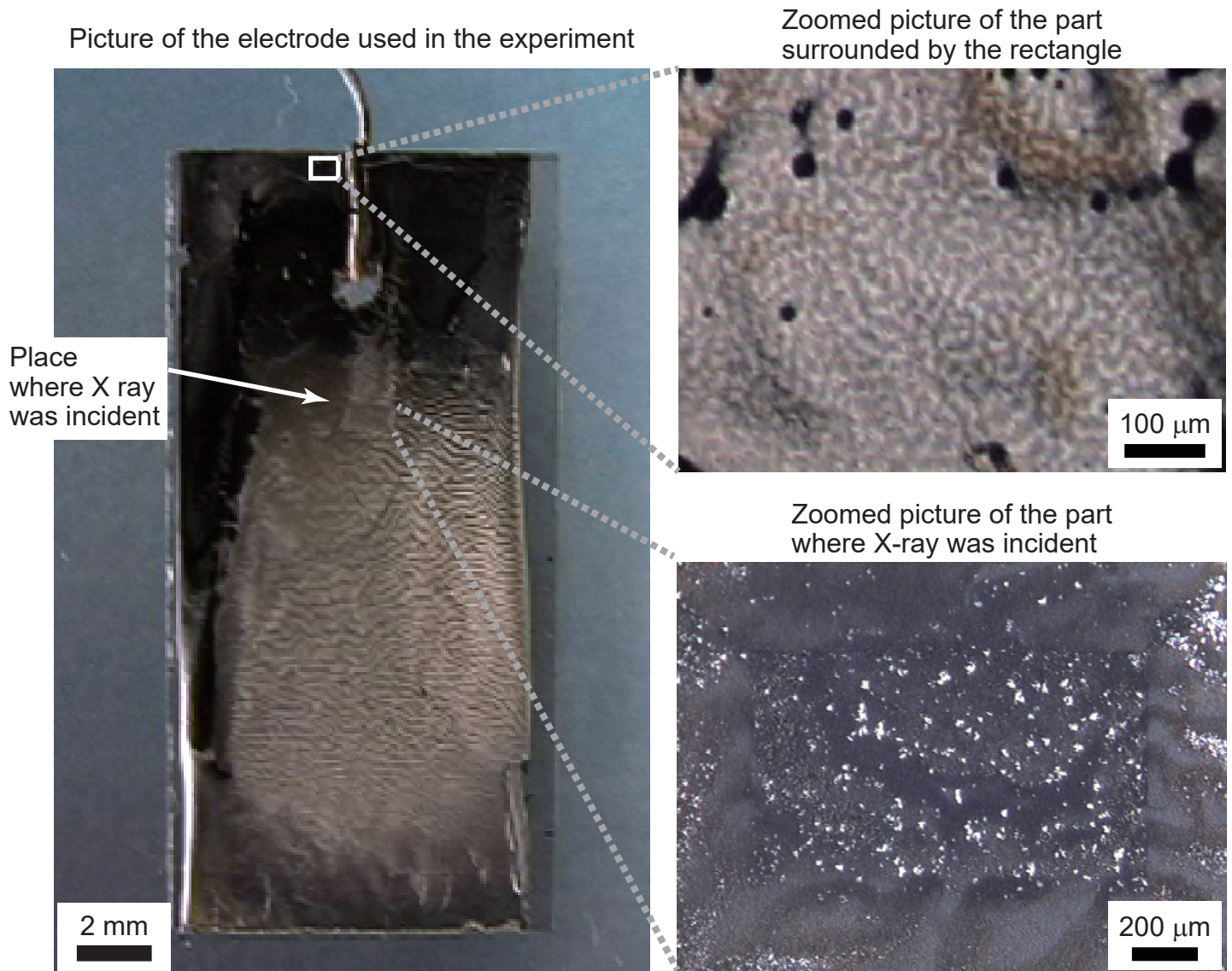


Figure S1. Observation result for the electrode surface under dry conditions using an optical microscope, after in situ real-time Ag imaging.